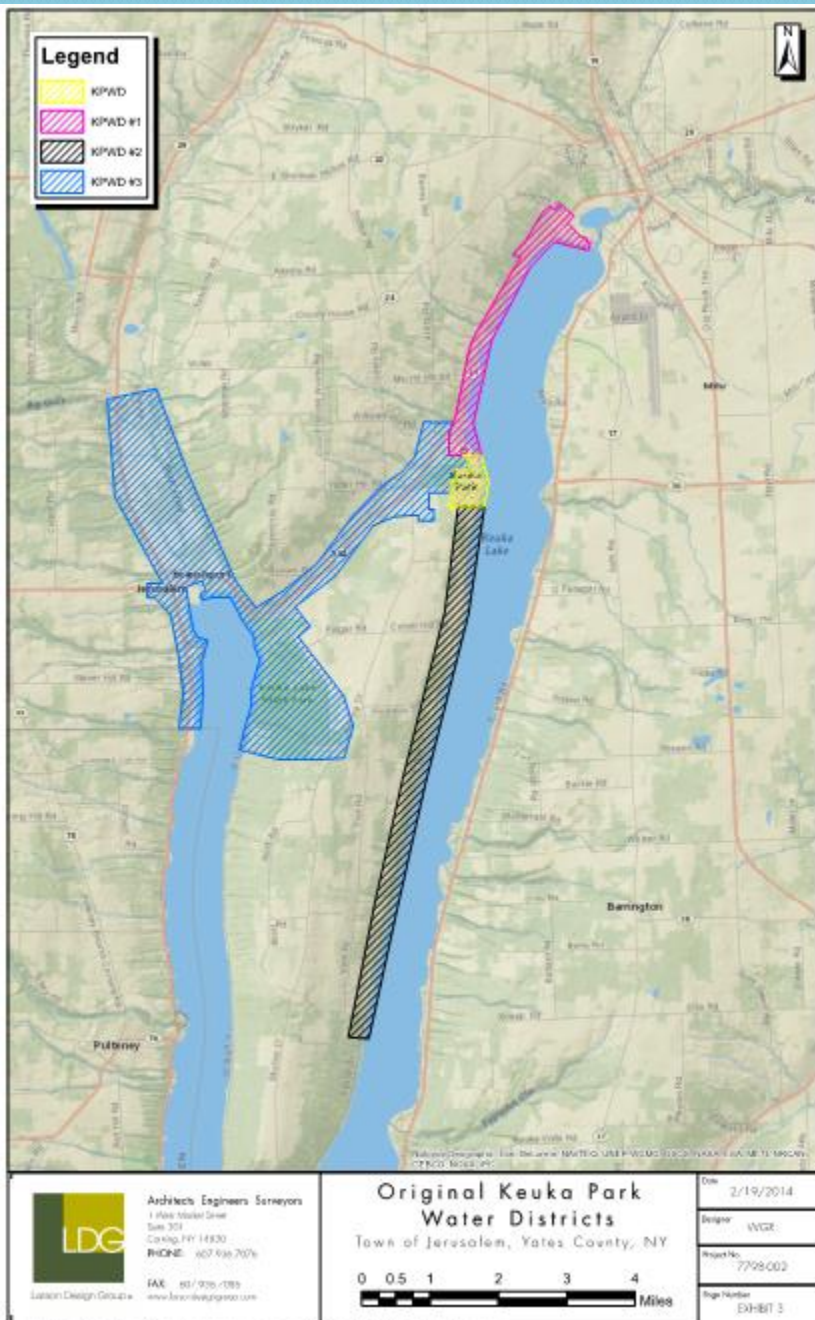


Town of Jerusalem Sewer Study

July 16th, 2016



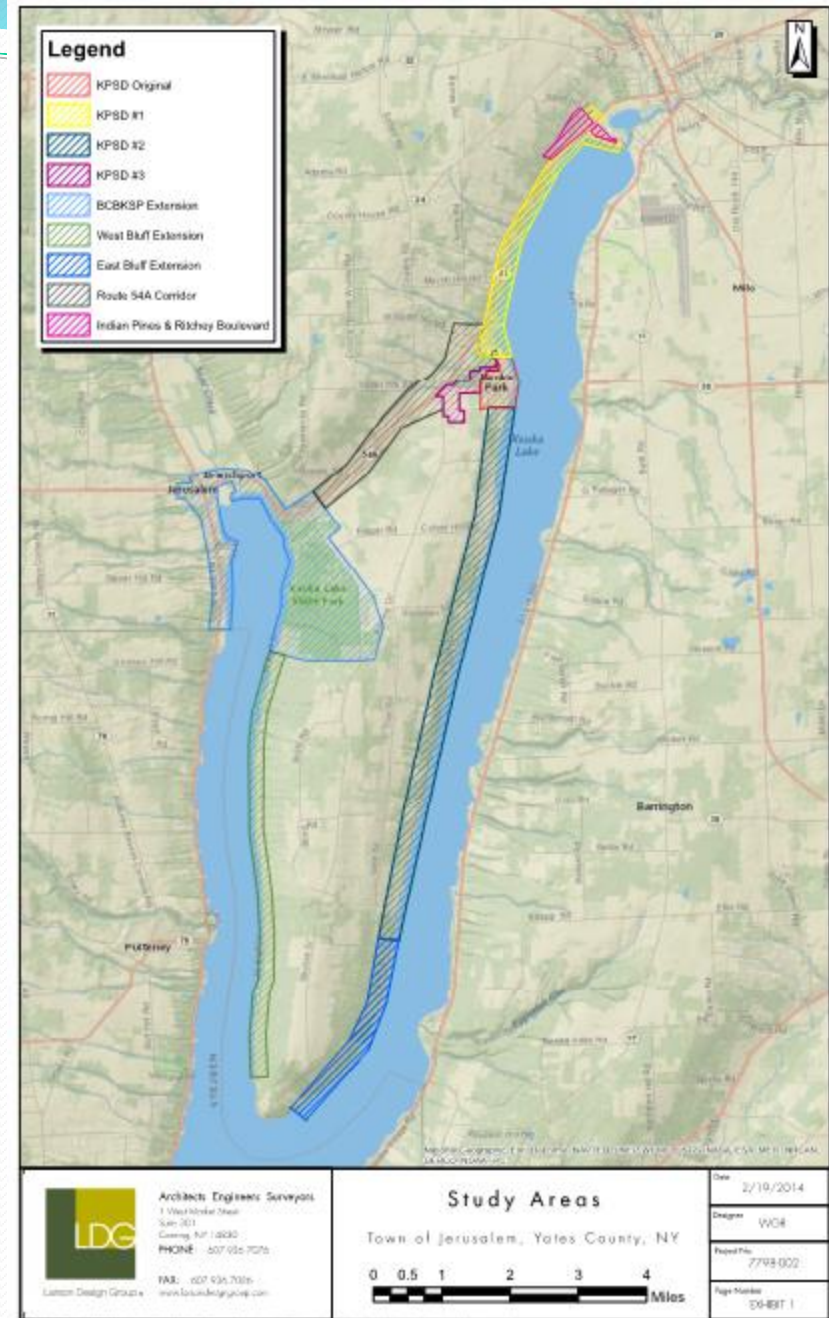
● Introduction-



- **Original KPSD (1968) 454 units**
- **KPSD 1 (1968) 250.5 units**
- **KPSD 2 (2003) 276 units**
- **KPSD 3 (2007) 16.5 units**
- **Total 997 units**

Sewer Study

- Branchport
- Crescent Beach
- Keuka Lake State Park
- West Bluff
- East Bluff
- State Route 54A corridor
- Indian Pines & Ritchey Blvd



Schedule

- **Map, Plan, and Report** Oct 2016
- **Environmental Review** Nov 2016
- **Secure Financing** Jun 2017
- **Design and Permitting** 2017-18
- **Advertise for Bids** Dec 2018
- **Open Bids and Award Contracts** Feb 2019
- **Issue Notice to Proceed** Mar 2019
- **Complete Construction/Syst.Start-up** Oct 2020
- **Complete Restoration/Closeout** Nov 2020

Benefits

- **TOJ Keuka Lake shoreline having sewer service for all except tip of bluff**
- **Municipal sewer would be big environmental help to lake quality (less chance of bacteria, viruses, fungi, parasites, pharmaceuticals)**
- **Spreading cost of PY contract over 1700 units vs 1000 units provides more stability for all users**

Cost to new customers

- **Projected at current interest rates \$125 monthly cost**
- **We are seeking subsidy or grants to reduce cost to align with existing KPSD#2 levels.**



Questions?
Comments?
Suggestions?